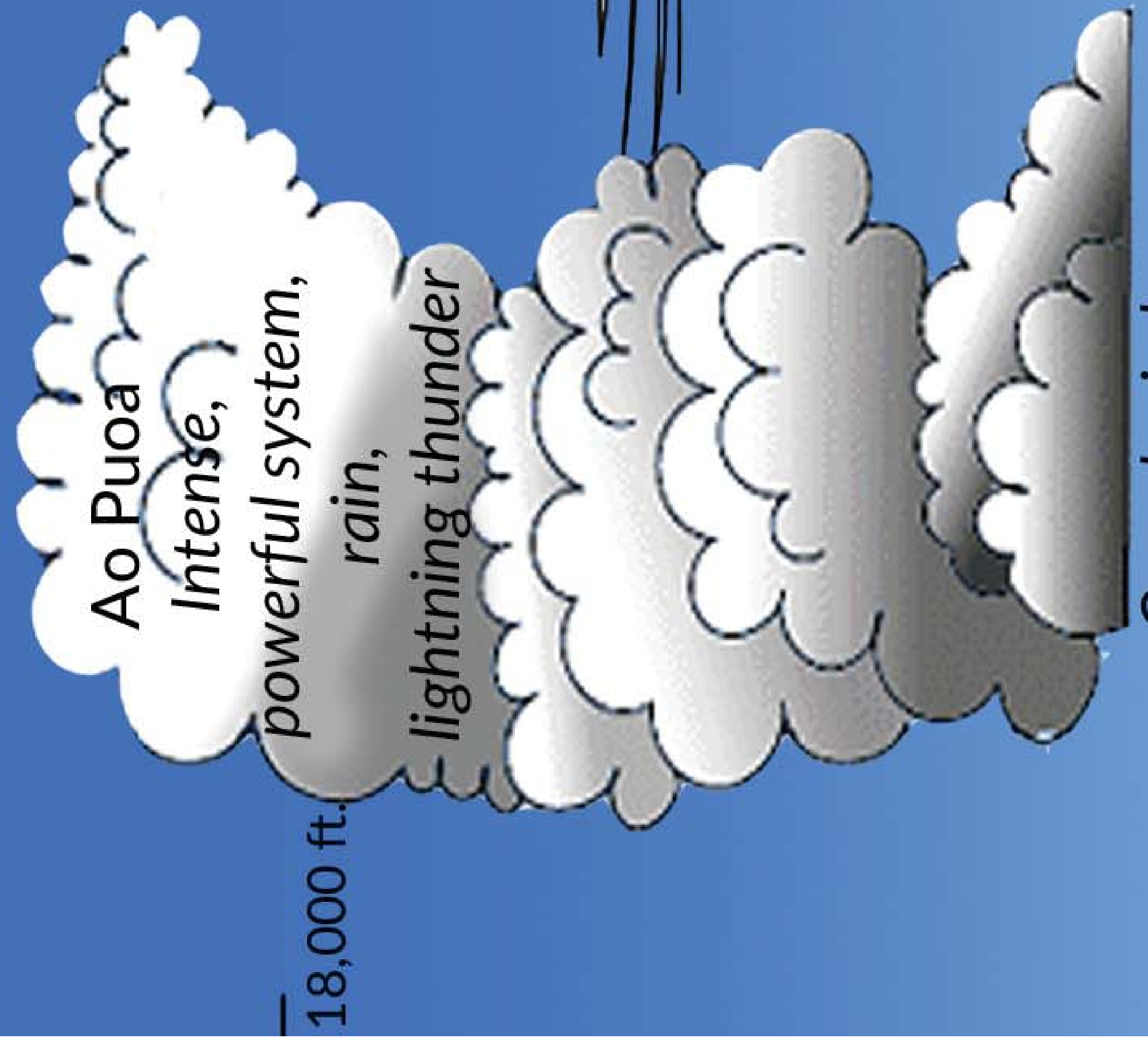
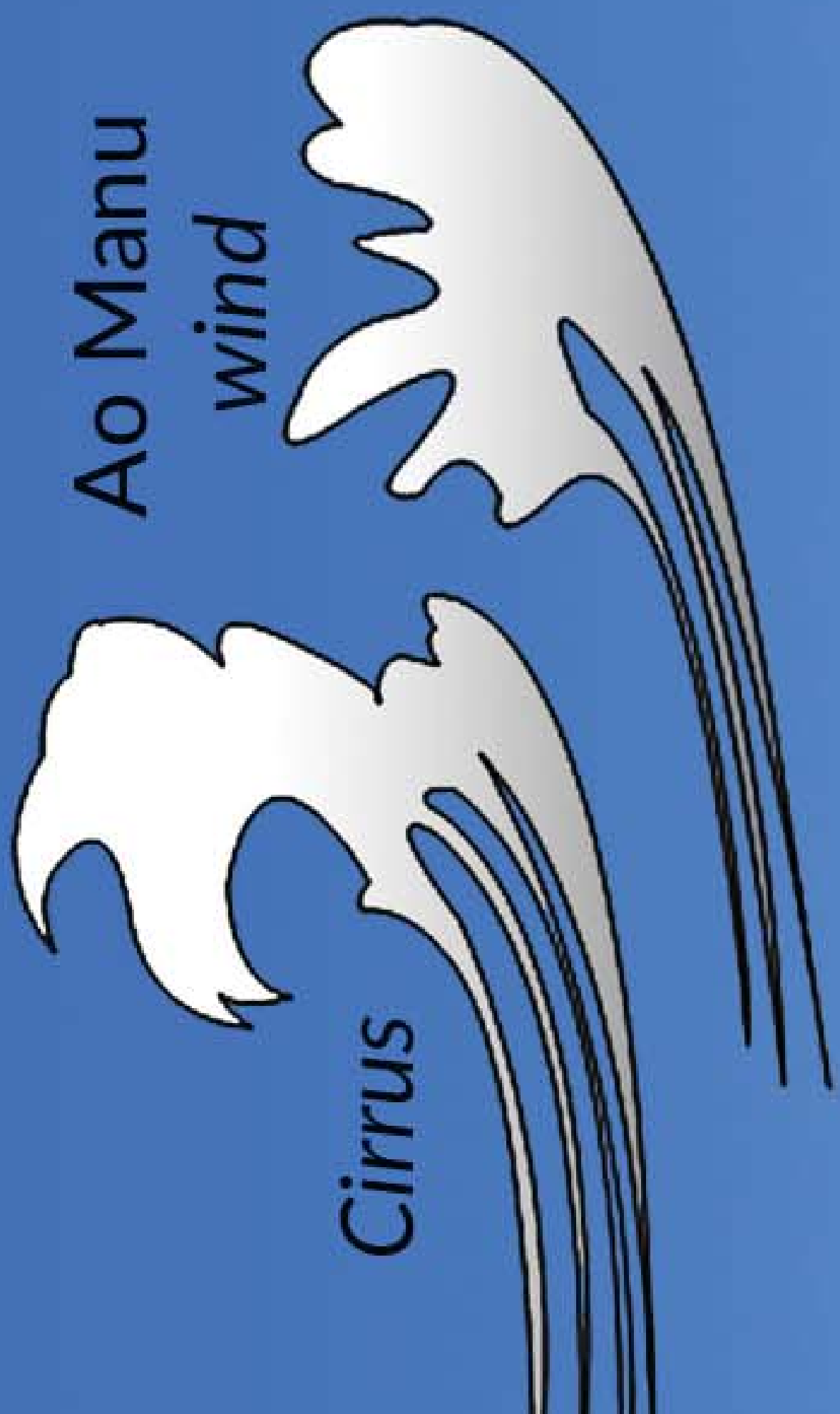


# Cloud Formations: North Kona & South Kohala Hawai'i Island



**Ao Puoa**  
Intense,  
powerful system,  
rain,  
lightning thunder

18,000 ft.



**Ao Manu**  
wind

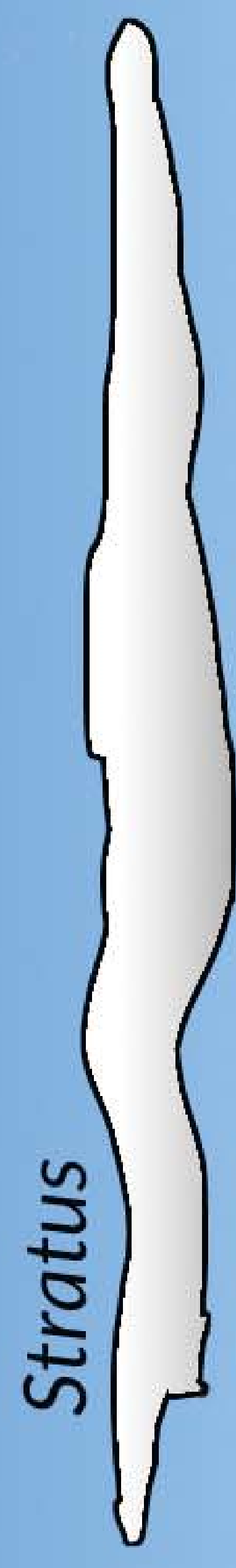
Cirrus



Cumulonimbus

6,000 ft.

**Nu'a**  
wind/surf pulses, 1 - 2 days



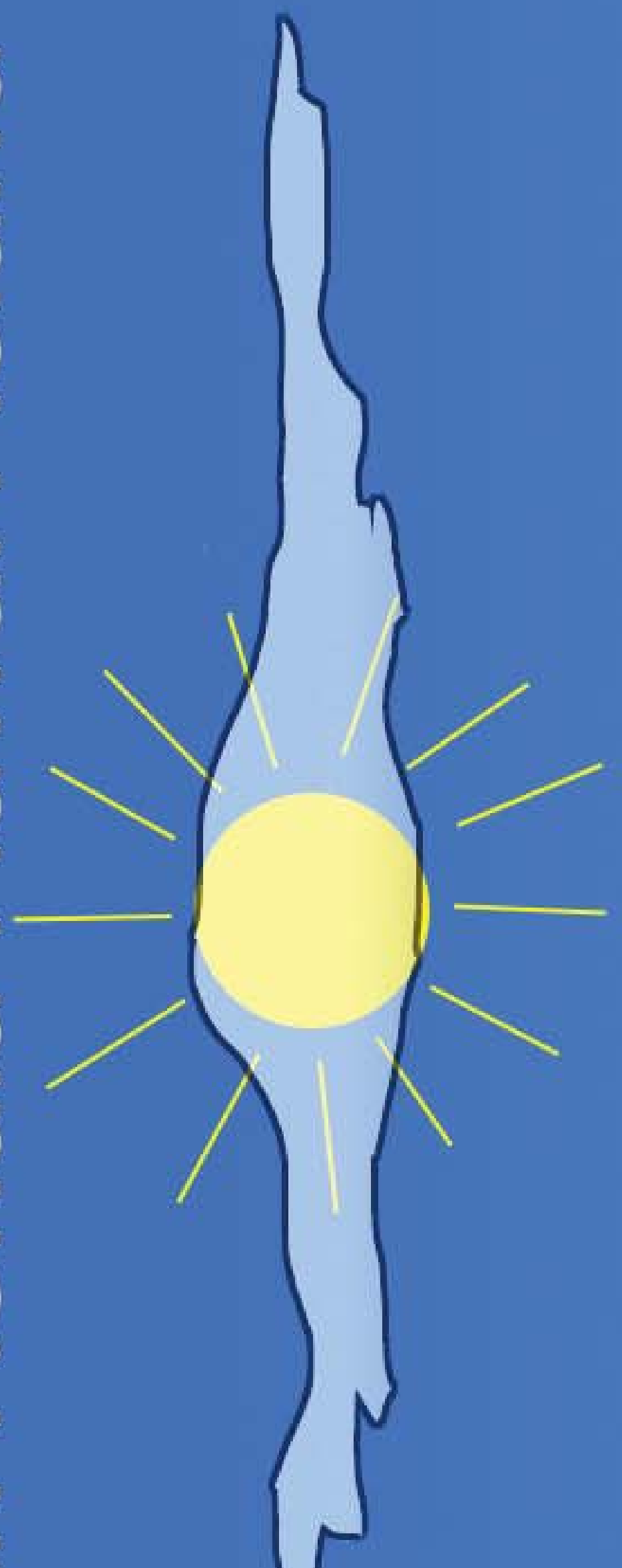
Stratus

**Ao Loa**  
grey blanket, rain

**Ao 'Opua**  
white & puffy on horizon,  
good weather, if dark, rain in afternoon

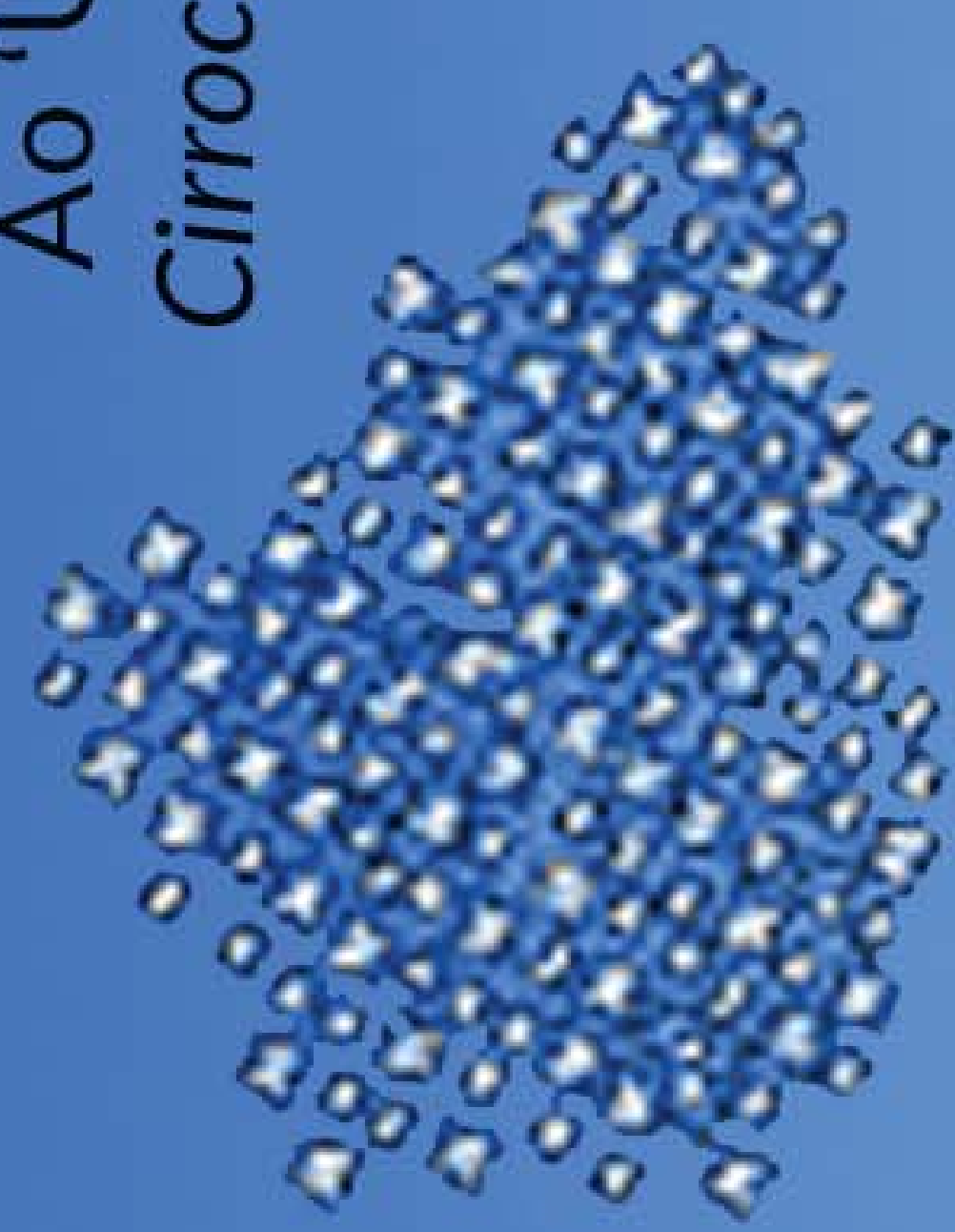


Stratocumulus



**Altostratus**  
ice crystals, early  
indicator of low pressure

**Ao 'Upena**  
Cirrocumulus



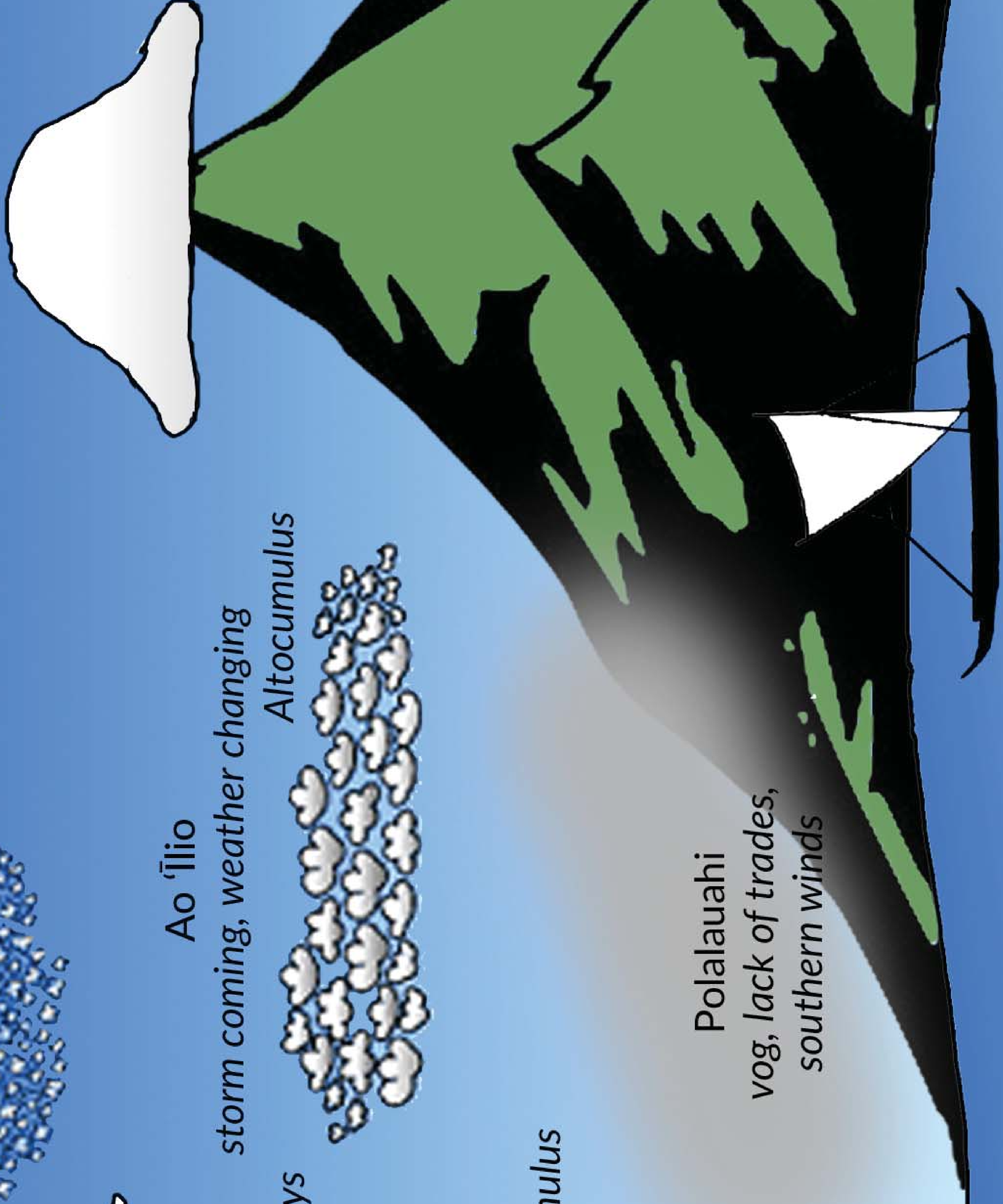
**Ao 'Ilio**  
storm coming, weather changing



Altocumulus

**Pāpale**

blanket cloud on mountain top; high  
pressure, good weather, breezy



**Polalauahi**  
vog, lack of trades,  
southern winds

We would like to thank Kalei Nu'uhiwa and the Edith Kanaka'ole Foundation for all of their research of Papahūliani that provided some of the cloud names listed here. Other cloud name sources and illustrations include Kilo by Na Pe'a hui and <https://scied.ucar.edu/webweather/clouds/cloud-types>.